

Farben und Stoffe At a glance

Trends + Qualities



DAUPHIN
HumanDesign® Group

Bali/Topas:C

Zusammensetzung/Composition:
100% Reine Kammgarawolle/
Pure worsted wool
Gewicht/Weight: ca./approx. 560 g/m
Breite/Width: 150 cm
Lichtechtheit/Light fastness:
Note/value 5-6 (ISO 105-B02)
Reibechtheit/Fastness to rubbing:
nass/wet: 4-5/trocken/dry: 4-5
Scheuerfestigkeit/Abrasion resistance:
50.000 Touren/rubs (Martindale)
DIN EN 1021: Teil 1/Part 1/Teil 2/Part 2



0326 Bluebell



0327 Sorrento



0328 Mariner



0332 Garland



5112 Arancia



0333 Rosso



5140 Siena



0334 Rhino



0366 Steel



0335 Pitch

Steelcut:C

Zusammensetzung/Composition:
90% Schurwolle/New wool, 10% Nylon/Nylon
Gewicht/Weight: ca./approx. 880 g/m
Breite/Width: 140 cm
Lichtechtheit/Light fastness:
Note/value 5-7 (ISO 105-B02)
Reibechtheit/Fastness to rubbing:
nass/wet: 4/ trocken/dry: 4-5
Scheuerfestigkeit/Abrasion resistance:
100.000 Touren/rubs (Martindale)
DIN EN 1021: Teil 1/Part 1/Teil 2/Part 2,
BS 5852, DIN 4102 B2, ÖNorm B1-Q1,
Italienische Klasse/ Italian class 11M,
California Technical Bulletin 117



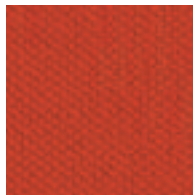
5322 Aventurine



5323 Amethyst



5331 Calcite



5311 Quartz



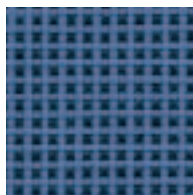
5310 Jasper



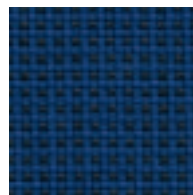
5300 Magnesite

Pro:C

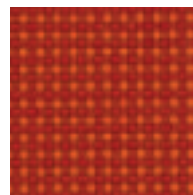
Zusammensetzung/Composition:
100% Trevira CS (Polyester)/
100% Trevira CS (Polyester)
Gewicht/Weight: ca./approx. 510 g/m
Breite/Width: 150 cm
Lichtechtheit/Light fastness:
Note/value 5 (ISO 105-B02)
Reibechtheit/Fastness to rubbing:
nass/wet: 4/trocken/dry: 4
Scheuerfestigkeit/Abrasion resistance:
80.000 Touren/rubs (Martindale)
DIN EN 1021: Teil 1/Part 1/Teil 2/Part 2
NF P 92-503/504 M1



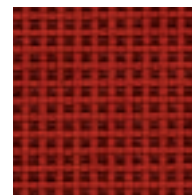
2121 Cielo



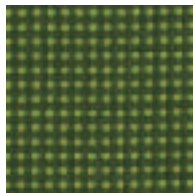
2120 Fjord



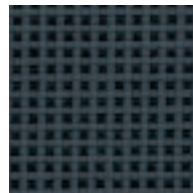
2111 Lava



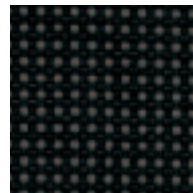
2110 Fire



2132 Meadow



2101 Dust



2100 Vulcano

Microcare:C

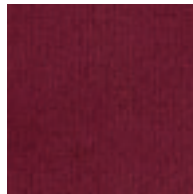
Zusammensetzung/Composition:
 100% Polyester mit Teflonoberfläche/
 100% polyester with teflon surface
 Trägergewebe/Substrate: Micromembrane
 Velourledereffekt, wasser- und urindicht,
 antibakteriell/velour-leather effect, water- and
 urine-proof, antibacterial
 Gewicht/Weight: ca./approx. 500 g/m
 Breite/Width: 150 cm
 Lichtechtheit/Light fastness: Note/value 5
 Reibechtheit/Fastness to rubbing:
 nass/wet: 4/trocken/dry: 4
 Scheuerfestigkeit/Abrasion resistance:
 80.000 Touren/rubs (Martindale)
 DIN EN 1021:Teil 1/Part 1/Teil 2/Part 2



6921 Suede Azure



6920 Suede Marine



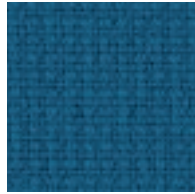
6910 Suede Burgundy



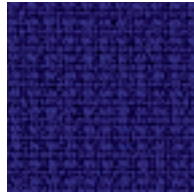
6900 Suede Black

Fame:B

Zusammensetzung/Composition:
 95% New Zealand-Wolle/New Zealand wool,
 5% Polyamid/Polyamide
 Gewicht/Weight: ca./approx. 610 g/m
 Breite/Width: 140 cm
 Lichtechtheit/Light fastness:
 Note/value 5 (ISO 105-B02)
 Reibechtheit/Fastness to rubbing:
 nass/wet: 4-5/trocken/dry: 4-5
 Scheuerfestigkeit/Abrasion resistance:
 200.000 Touren/rubs (Martindale)
 DIN EN 1021: Teil 1/Part 1 Teil 2/Part 2



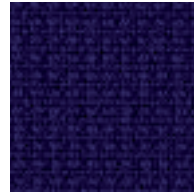
5622 Madrid



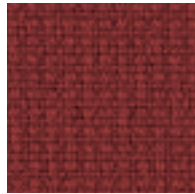
5620 Moscow



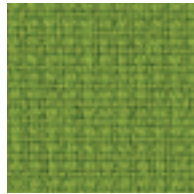
5611 Cairo



5621 Lisbon



5610 Paris



5630 Berlin



5601 Vienna



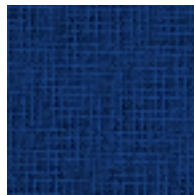
5600 Warsaw

Space:B

Zusammensetzung/Composition:
 100% Kammgarnwolle/Worsted wool
 Gewicht/Weight: ca./approx. 570 g/m
 Breite/Width: 150 cm
 Lichtechtheit/Light fastness:
 Note/value 4-6 (ISO 105-B02)
 Reibechtheit/Fastness to rubbing:
 nass/wet: 4-5/trocken/dry: 4-5
 Scheuerfestigkeit/Abrasion resistance:
 70.000 Touren/rubs (Martindale)
 DIN EN 1021: Teil 1/Part 1 Teil 2/Part 2



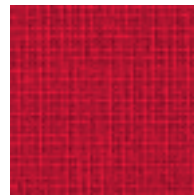
5021 Earth



5020 Neptun



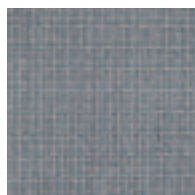
5022 Uranus



5010 Mars



5011 Venus



5002 Pluto



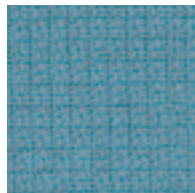
5001 Mercur



5000 Triton

Cava:B

Zusammensetzung/Composition:
 90% Schurwolle/New wool, 10% Nylon/Nylon
 Gewicht/Weight: ca./approx. 460 g/m
 Breite/Width: 135 cm
 Lichtechtheit/Light fastness:
 Note/value 5-7 (ISO 105-B02)
 Reibechtheit/Fastness to rubbing:
 nass/wet: 4/trocken/dry: 4-5
 Scheuerfestigkeit/Abrasion resistance:
 100.000 Touren/rubs (Martindale)
 DIN EN 1021: Teil 1/Part 1 Teil 2/Part 2,
 BS 5852, ÖNorm B1-Q1, Italienische Klasse/
 Italian class 11M,
 California Technical Bulletin 117



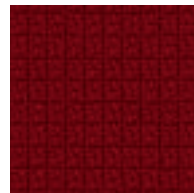
5225 Mediterranean



5221 Adria



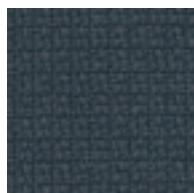
5220 Amazon



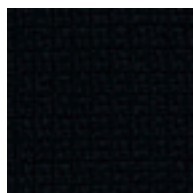
5210 Canyon



5202 Sacramento



5201 Savannah



5200 Senegal

Stavanger:B

Zusammensetzung/Composition:
 100% Trevira CS/Trevira CS
 Gewicht/Weight: ca./approx. 406 g/m
 Breite/Width: 150 cm
 Lichtechtheit/Light fastness:
 Note/value 5-7 (ISO 105-B02)
 Reibechtheit/Fastness to rubbing:
 nass/wet: 5/trocken/dry: 5
 Scheuerfestigkeit/Abrasion resistance:
 100.000 Touren/rubs (Martindale)
 DIN EN 1021: Teil 1/Part 1/Teil 2/Part 2
 NFP 92-503/504M1



2931 Ariagne



2920 Ran



2912 Lada



2910 Bastet



2930 Dea



2903 Hades



2901 Alekto



2900 Hekate

Globe:B

Zusammensetzung/Composition:
 100% Polyester/Polyester
 Gewicht/Weight: ca./approx. 675 g/m
 Breite/Width: 145 cm
 Lichtechtheit/Light fastness:
 Note/value 5 (ISO 105-B02)
 Reibechtheit/Fastness to rubbing:
 nass/wet: 4-5/trocken/dry: 4-5
 Scheuerfestigkeit/Abrasion resistance:
 80.000 Touren/rubs (Martindale)
 DIN EN 1021: Teil 1/Part 1 Teil 2/Part 2
 California Technical Bulletin 117 sec.1



4521 Orchid



4520 Primrose



4530 Daisy



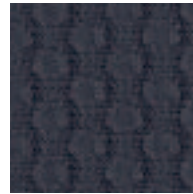
4510 Rose



4540 Calla



4501 Iris



4502 Clove



4500 Lily

Decade:B

Speziell für 24-Std.-Einsatz/ Especially for 24 hour use

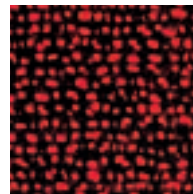
Zusammensetzung/Composition:
 50% Polyamid/Polyamide,
 33% Schurwolle/Virgin wool,
 10% Visil/Visil, 7% Viskose/Viscose
 Gewicht/Weight: ca./approx. 610 g/m
 Breite/Width: 140 cm
 Lichtechtheit/Light fastness:
 Note/value 6 (ISO 105-B02)
 Reibechtheit/Fastness to rubbing:
 nass/wet: 4/trocken/dry: 4
 Scheuerfestigkeit/Abrasion resistance:
 500.000 Touren/rubs (Martindale)
 DIN EN 1021:Teil 1/Part 1/Teil 2/Part 2



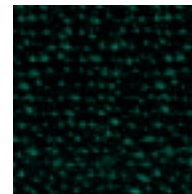
4022 Perpetual



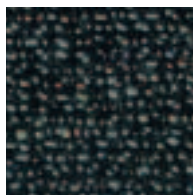
4020 Hour



4010 Minute



4030 Second



4001 Era



4000 Night



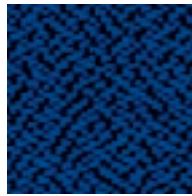
4002 Forever

King:A

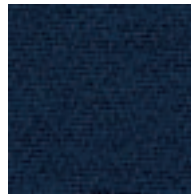
Zusammensetzung/Composition:
100% Trevira CS (Polyester)/
100% Trevira CS/(Polyester)
Gewicht/Weight: ca./approx. 410 g/m
Breite/Width: 140 cm
Lichtechtheit/Light fastness:
Note/value 5-6 (ISO 105-B02)
Reibechtheit/Fastness to rubbing:
nass/wet: 4-5/trocken/dry: 4-5
Scheuerfestigkeit/Abrasion resistance:
100.000 Touren/rubs (Martindale)
DIN EN 1021: Teil 1/Part 1/Teil 2/Part 2
NF P 92-503/504 M1



0232 Aquilia



0231 Spika



0266 Tigris



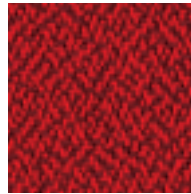
0234 Goya



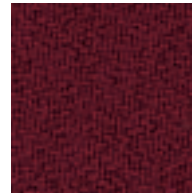
2311 Balbi



0235 Etna



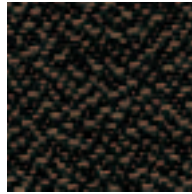
0265 Vesuv



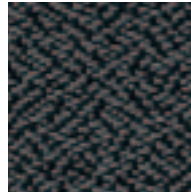
0268 Nil



2301 Apo



0267 Brazil



0237 Dema



0238 Nigra

King Melange:A

Zusammensetzung/Composition:
100% Trevira CS (Polyester)/
100% Trevira CS/(Polyester)
Gewicht/Weight: ca./approx. 390 g/m
Breite/Width: 140 cm
Lichtechtheit/Light fastness:
Note/value 6 (ISO 105-B02)
Reibechtheit/Fastness to rubbing:
nass/wet: 4-5/trocken/dry: 4-5
Scheuerfestigkeit/Abrasion resistance:
50.000 Touren/rubs (Martindale)
DIN EN 1021: Teil 1/Part 1/Teil 2/Part 2
NF P 92-503/504 M1



2521 Garda



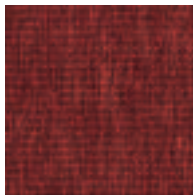
2520 Grado



2531 Tropea



2530 Tivoli



2510 Ferrara



2501 Melfi



2500 Taranto

Charlotta:A

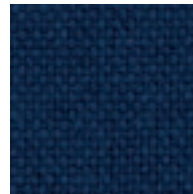
Zusammensetzung/Composition:
60% Viskose/Viscose, 40% Wolle/Wool
Gewicht/Weight: ca./approx. 570 g/m
Breite/Width: 140 cm
Lichtechtheit/Light fastness:
Note/value 6 (ISO 105-B02)
Reibechtheit/Fastness to rubbing:
nass/wet: 4/trocken/dry: 4
Scheuerfestigkeit/Abrasion resistance:
50.000 Touren/rubs (Martindale)
⚡ = leitfähig/conductive
DIN EN 1021: Teil 1/Part 1/Teil 2/Part 2



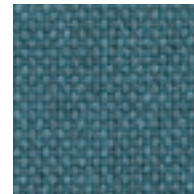
0504 (0404 ⚡)
Corinth



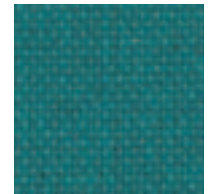
0576 Royal



0502 (0402 ⚡)
Indigo



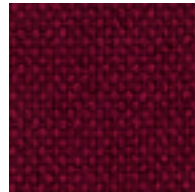
0508 Aqua



0575 Mermaid



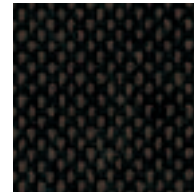
0522 (0422 ⚡)
Tornado



0521 (0421 ⚡)
Bordeaux



0503 (0410 ⚡)
Espresso



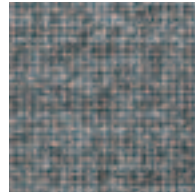
0501 (0403 ⚡)
Mocca



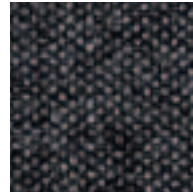
0567 Bosco



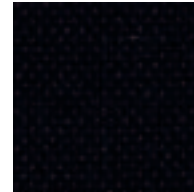
0500 Champagne



0513 (0413 ⚡) Grey



0516 Charcoal



0511 (0411 ⚡) Black

Valencia:A

Kunstleder/Vinyl
Zusammensetzung/Composition:
Trägergewebe/Base fabric:
100% Polyester/Polyester
Beschichtung/coating: 100 % PVC/PVC
Blut- urin- und ölbeständig, schwerentflammbar/
Blood, urine and oil resistant, flame retardant
Gewicht/Weight: ca./approx. 900 g/m
Breite/Width: 140 cm
Lichtechtheit/Light fastness:
Note/value 6 (ISO 105-B02)
Scheuerfestigkeit/Abrasion resistance:
50.000 Touren/rubs (Martindale)
DIN EN 1021: Teil 1/Part 1/Teil 2/Part 2



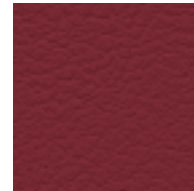
3221 Delft



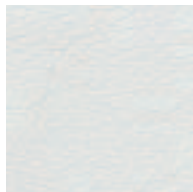
3220 Marine



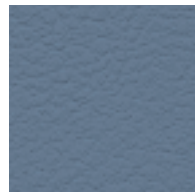
3202 Rot/Red



3207 Port



3205 Weiß/White



3208 Titan



3200 Schwarz/Black



3230 Grün/Green

Madrid:A

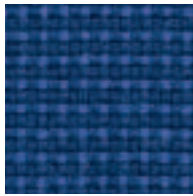
Kunstleder leitfähig/Vinyl conductive
Zusammensetzung/Composition:
Trägergewebe/Base fabric 100%
Polyester/Polyester, Beschichtung/coating
100 % PVC/PVC
Gewicht/Weight: ca./approx. 580 g/m
Breite/Width: 140 cm
Lichtechtheit/Light fastness:
Note/value 5-6 (ISO 105-B02)
Reibechtheit/Fastness to rubbing:
nass/wet: 4-5/ trocken/dry: 4-5



0426 ⚡ Schwarz/Black

Chateau Plus:P

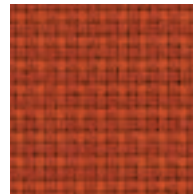
Zusammensetzung/Composition:
 100% Perfortex® Plus/100% Perfortex® Plus
 Gewicht/Weight: ca./approx. 350 g/m
 Breite/Width: 140 cm
 Lichtechtheit/Light fastness: Note/value 6
 Reibechtheit/Fastness to rubbing:
 nass/wet: 4/trocken/dry: 4
 Scheuerfestigkeit/Abrasion resistance:
 50.000 Touren/rubs (Martindale)
 DIN EN Teil 1/Part 1/Teil 2/Part 2
 NF P 92-503-M1
 CSE-RF 3/77-Class 1



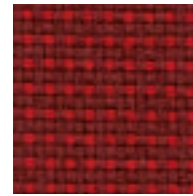
2821 Chinon



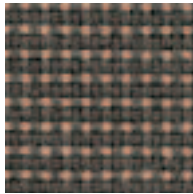
2820 Bonpas



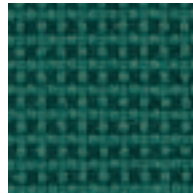
2811 Noizay



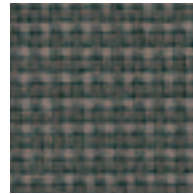
2810 Dollard



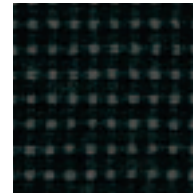
2840 Medoc



2830 Avrilly



2801 Fenelon



2800 Hazeville

Polo:P

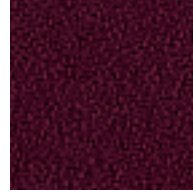
Zusammensetzung/Composition:
 100% Polyester/100% Polyester
 Gewicht/Weight: ca./approx. 350 g/m
 Breite/Width: 140 cm
 Lichtechtheit/Light fastness:
 Note/value 6 (ISO 105-B02)
 Reibechtheit/Fastness to rubbing:
 nass/wet: 4-5/trocken/dry: 4-5
 Scheuerfestigkeit/Abrasion resistance:
 60.000 Touren/rubs (Martindale)
 DIN EN 1021: Teil 1/Part 1/Teil 2/Part 2



4620 Sicilia



4610 Liguria



4611 Piemonte



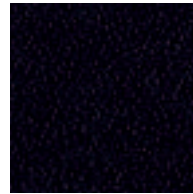
4630 Toscana



4602 Sardegna



4601 Calabria

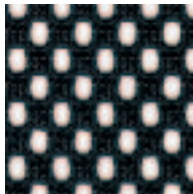


4600 Veneto

Web A

**Preisgruppe je nach Sitzpolsterung/
 Price depending on upholstery of
 the seat.**

Web A: 100% Polyester/Polyester
 ca./approx. 510 g/lfm.
 100.000 Scheuertouren/Rubs
 Netzgewebe/Mesh fabric Web A für Rückenleh-
 nen/for backrests **Mille Miglia, Join Me,
 Teo 2** und/and **dat-o**



Web A
 0465 Trampoline

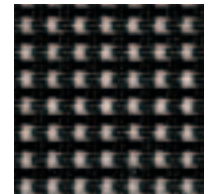


Web A*
 0466 Matrix
 * nur für dat-o/only for dat-o

Web E

**Preisgruppe je nach Sitzpolsterung/
 Price depending on upholstery of
 the seat.**

Web E: 75% Polyester/Polyester,
 25% Polyamid/Polyamide
 ca./approx. 370 g/lfm.
 40.000 Scheuertouren/Rubs
 Netzgewebe/Mesh fabric Web E für Rückenleh-
 nen/for backrests **HighWay**



Web E
 0441 Route

Web F

**Preisgruppe je nach Sitzpolsterung/
 Price depending on upholstery of
 the seat.**

Web F: 82% Polyester/Polyester,
 18% Polyurethan-Elastan/Polyurethane/Elastan
 30.000 Scheuertouren/Rubs
 BS 5852 Teil 1/Part 1
 Netzgewebe/Mesh fabric Web F
 für Rückenlehnen/for backrests **TakeOver**

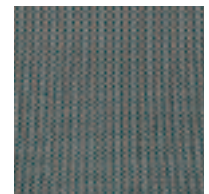


Web F
 0447 Give

Web G

**Preisgruppe je nach Sitzpolsterung/
 Price depending on upholstery of
 the seat.**

Web G: 100% Trevira CS/100% Trevira CS
 25.000 Scheuertouren/Rubs
 BS 5852 Teil 1/Part 1
 Strickgewebe/Knit fabric Web G
 für Rückenlehnen/for backrests **Open End**



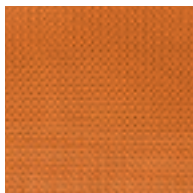
Web G
 0445 Open

Web H

**Preisgruppe je nach Sitzpolsterung/
 Price depending on upholstery of
 the seat.**

Text fehlt

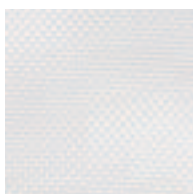
Netzgewebe/Mesh fabric Web H



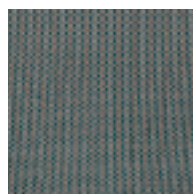
Web H
 4241 Orange/Orange



Web H
 4242 Grün/Green



Web H
 4240 Weiß/White

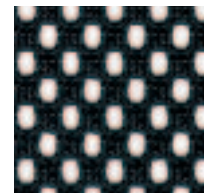


Web H
 4245 Schwarz/Black

Web I

**Preisgruppe je nach Sitzpolsterung/
 Price depending on upholstery of
 the seat.**

Web I: 100% Polyester/Polyester
 ca./approx. 400 g/lfm.
 100.000 Scheuertouren/Rubs
 Atmungsaktiv und feuchtigkeitregulierend/
 Breathable and moisture regulating
 Netzgewebe/Mesh fabric Web I für
 Rückenlehnen/for backrests **sim-o mesh**



Web I
 xxxx xx

Lavalina®:F

Premium Echt-Leder

Feinstes, naturbelassenes Nappaleder. Anilinfärbtes Rindsobleder der Spitzenklasse. Mit natürlichen Ölen behandelt, tuchweicher Griff, atmungsaktiv, hautsympatisch, feuchtigkeitsregulierend. Wasserlösliche Farben ohne chemische Lösungsmittel./

Premium leather

The finest natural Nappa leather top quality. Aniline dyed cowhide leather. Treated with natural oils, fabric-soft touch, breathable, dermatologically safe, moisture control. Water-soluble dyes without solvents. Lichtechtheit/Light fastness: Note/value 4 (DIN 54004) Reibechtheit/Fastness to rubbing: nass/wet: 4/trocken/dry: 4 (DIN 53339) DIN 1021 - Teil 1/Part 1/Teil 2/Part 2



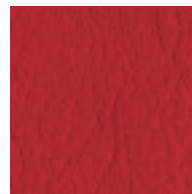
0708 Canaletto



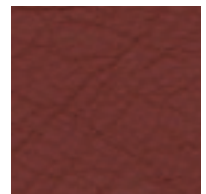
0702 Lake



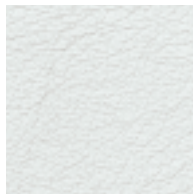
0701 Merlo



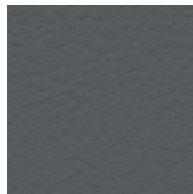
7010 Calypso



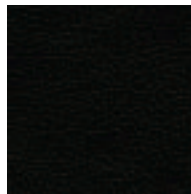
7012 Terracotta



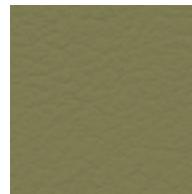
0795 White



7001 Anthracite



0700 Black



7031 Pistachio



7040 Cacao

Leder/Leather:E

Nappaleder pigmentiert (Semi-Anilinleder) anilinfärbtes leicht mit Pigmentfarbe abgedecktes Rindsobleder, sehr strapazierfähig, vollnarbig, geprägt, chromgegerbt./ Pigmented Nappa leather (semi-aniline leather) aniline dyed cowhide leather with light pigment dyeing, very hard wearing, full-grain, embossed, alum tanned.

Lichtechtheit/Light fastness: Note/value 5 (DIN 54004) Reibechtheit/Fastness to rubbing: nass/wet: 4-5/trocken/dry: 4-5 (DIN 53339)



0180 Onyx

Comfort:E

Zusammensetzung/Composition: 88% Polyester/Polyester, 12% Polyurethan/Polyurethane Gewicht/Weight: ca./approx. 385 g/m Breite/Width: 140 cm Lichtechtheit/Light fastness: Note/value 5 (ISO 105-B02) Reibechtheit/Fastness to rubbing: nass/wet: 4-5/trocken/dry: 4-5 Scheuerfestigkeit/Abrasion resistance: 100.000 Touren/rubs (Martindale) DIN EN 1021: Teil 1/Part 1



6022 Lake



6020 Pacific



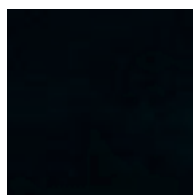
6011 Persian



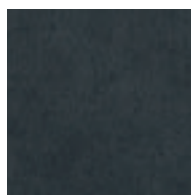
6010 Tropic



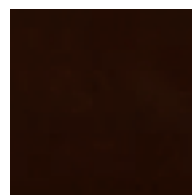
6042 Snow



6000 Graphite



6001 Pewter



6040 Siam

Decade Plus:E

Für Kassenstühle/ For checkout chairs

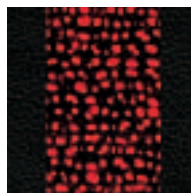
Zusammensetzung/Composition: 50% Polyamid/Polyamide, 33% Schurwolle/Virgin wool, 10% Visil/Visil, 7% Viskose/Viscose mit ledergefassten Seitenteilen/ with side parts trimmed in leather Gewicht/Weight: ca./approx. 658 g/m Breite/Width: 140 cm Lichtechtheit/Light fastness: Note/value 5 (ISO 105-B02) Reibechtheit/Fastness to rubbing: nass/wet: 4/trocken/dry: 4 Scheuerfestigkeit/Abrasion resistance: 500.000 Touren/rubs (Martindale) DIN EN 1021:Teil 1/Part 1/Teil 2/Part 2



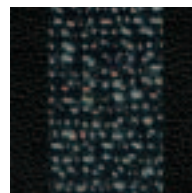
4082 Hour Plus



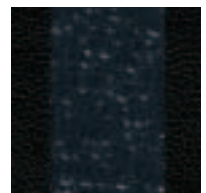
4083 Second Plus



4081 Minute Plus



4089 Era Plus



4080 Night Plus

Kunststoff-Farben/
Plastic colours: **Open End**



Code 40
Blau/Blue



Code 42
Weiß/White



Code 41
Anthrazit/Anthracite



Code 08
Rot/Red



Code 06
Schwarz/Black

Kunststoff-Farben/
Plastic colours: **Eddy**



Code 09
Blau/Blue



Code 08
Rot/Red



Code 07
Grau/Grey



Code 06
Schwarz/Black



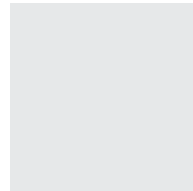
Code 22 Aqua
transparent/translucent



Code 23 Ocean
transparent/translucent



Code 21 Orange
transparent/translucent



Code 24 Ice
transparent/translucent

Kunststoff-Farben/
Plastic colours: **Ecco!**



Code 19
Ultramarin/Navy

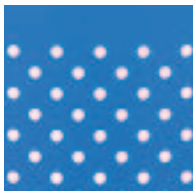


Code 18
Rubinrot/Ruby-red



Code 06
Schwarz/Black

Lochblech-Farben/
Perforated metal plate
colours: **Sento**



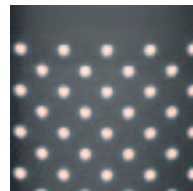
Code 47
Blau/Blue



Code 04
Silber/Silver



Code 09
Rot/Red



Code 06
Schwarz/Black

Holz/WOOD: Open End, Sento, Amico, Froggy, Enzo, Bobo

Wasserbeize auf Buche

Standardausführung: Buche natur (0150)

Aufpreise für Beiztöne lt. Preisliste/

Water stained beechwood

Standard design: natural beechwood (0150)

Extra charge for special shades, see price list

* nur für Bobo und Enzo/
only for Bobo and Enzo



0150
Buche natur/
Natural beechwood



0118
Buche ahorn gebeizt/
Maple stained beech

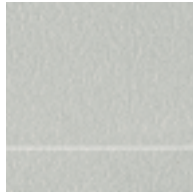


0121 *
Buche weiß gebeizt/
White stained beech



0129
Buche schwarz gebeizt/
Black stained beech

Tischplatten/Table Tops: Agenda, Enzo, Plenar



0891
Melamin hellgrau, Kante ABS hellgrau/
Light grey melamine, light grey ABS edge



0899
Melamin hellgrau gesprenkelt, Kante ABS hellgrau/
Light grey speckled melamine, light grey ABS edge



0885
BucheDekor, Kante ABS Buche/
Beechwood finish, beech ABS edge



0869
Ahorn Dekor, Kante ABS Ahorn/
Maple finish, maple ABS edge



0881
Melamin schwarz, Kante ABS schwarz/
Black melamine, black ABS edge



0890
Melamin hellgrau, Kante ABS grau-blau gestreift/
Light grey melamine, grey and blue striped ABS edge



0894
Melamin hellgrau gesprenkelt, Kante ABS grau blau gestreift/
Light grey speckled melamine, grey and blue striped ABS edge



0886
Buche Dekor, Kante Multiplex/
Beechwood finish, multiplex edge



0888
Buche-Echtholz furnier, Kante Buche Echtholz/
Genuine beech veneer, genuine beech edge



0887
Platte und Kante Buche-Echtholz furnier, ahorn gebeizt/
Top and edge genuine beech veneer, maple stained

Tischplatten/Table Tops: Agenda Vario



0841
Melamin hellgrau, Platte aufgedoppelt (45 mm). Kante Buche Massivholz, unten 45° angeschrägt/
Light grey melamine, reinforced table top (45 mm). Solid wood beech edge, bevelled below (45°)



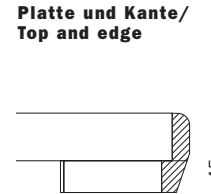
0842
Melamin hellgrau gesprenkelt, Platte aufgedoppelt (45 mm). Kante Buche Massivholz, unten 45° angeschrägt/
Light grey speckled melamine, reinforced table top (45 mm). Solid wood beech edge, bevelled below (45°)



0844
Buche Dekor, Platte aufgedoppelt (45 mm). Kante Buche Massivholz, unten 45° angeschrägt/
Beechwood finish, reinforced table top (45 mm). Solid wood beech edge, bevelled below (45°)



0845
Ahorn Dekor, Platte aufgedoppelt (45 mm). Kante Buche Massivholz ahorn gebeizt, unten 45° angeschrägt/
Maple finish, reinforced table top (45 mm). Solid wood beech edge, maple stained, bevelled below (45°)

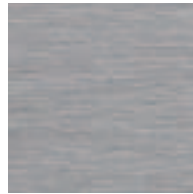


Platte und Kante/ Top and edge

Tischplatten/ Table Tops: Join Me



0160
Aluminium-Platte, silber eloxiert/
Aluminium table top, anodised silver



0165
Aluminium-Platte, Einlage Melamin silber, Kante Aluminium/
Aluminium table top, silver melamine insert, aluminium edge



Tischplatten/ Table Tops: Bobo
Für Bobo auch Holzplatten erhältlich, Oberflächenauswahl Holz (s.o.)/
For Bobo also wooden tops available, surface finishes Wood (see above)



0129
Buche schwarz gebeizt/
Black stained beech



0998
Satiniertes Sicherheitsglas/
Satin-finish safety glass (ESG/DIN 1249)

Tischplatten/ Table Tops: Ecco!



0910
HPL-Platte hellgrau gesprenkelt, Kante schwarz/
Light grey speckled HPL table top, black edge



0920
HPL-Platte silber, Kante schwarz/
Silver HPL table top, black edge



0930
wie 0920, jedoch mit 4 durchgehenden Alu-Einlagen (Alucompact®) as 0920 but with 4 continuous aluminium inserts (Alucompact®)



Tischplatte/ Table Top: FairPlay



0998
Satiniertes Sicherheitsglas/
Satin-finish safety glass (ESG/DIN 1249)

Auslaufstoffe 2007 / Discontinued Fabrics 2007

Bali/Topas: C	5111 Estate 5130 Primavera 5131 Apple 5141 Ocre	Bolero: B	0429 Admiral 0432 Jet 0433 Eclipse 0434 Argent 0436 Chianti
Pro: C	2130 Forrest 2140 Beach	Stavanger: B	2902 Eris 2911 Astarte
Rooster: C	6500 Root 6511 Pumpkin	Capua: B	0270 Raven 0272 Grass 0273 Venetian 0275 Empire Blue
Microcare: C	6901 Suede Silver 6911 Suede Fire Red 6912 Suede Brick 6930 Suede Grass 6940 Suede Chocolate	King: A	0261 Memphis 0264 Saphir 2340 Kelut
Space: B	5012 Sun 5030 Jupiter 5031 Moon 5040 Saturn	Kunstleder/Vinyl: A	0240 Tiberius 0260 Augustus 0280 Schwarz/Nero 0283 Cäsar
Kelly: B	5500 Ohio 5501 Miami 5510 Klondike 5511 Hudson 5512 Ottawa 5520 Yukon 5521 Fraser 5530 Orinoco	Polyolefin: P	0211 Grün/Green 0212 Rot/Red 0213 Blau/Blue 0214 Schwarz/Black 0227 Grau/Grey 0229 Dunkelrot/Dark red 0250 Hellgrau/Light grey
Puma: B	6300 Effet 6310 Contra 6311 Matt 6320 Remis 6330 Re	Lavalina: F	0703 Petrol 7011 Salsa
Cava: B	5211 Colorado 5212 Congo 5213 Ebro 5222 Aral 5223 Amur 5230 Gambia 5231 Ganges	Comfort: E	6002 Mouse 6021 Atlantic 6030 Mint 6041 Caramel
		Web B	0418 Notte
		Web D	9604 Knit

Noch bis 31.12.2007 lieferbar/
Still available until 31.12.2007

Hersteller/Manufacturer:

Bürositzmöbelfabrik **Friedrich-W. Dauphin GmbH & Co.**, Espanstraße 29, **D-91238 Offenhausen/Germany**
Tel. +49 (0) 91 58 / 17 - 0, **Fax** +49 (0) 91 58 / 10 07, **Internet** www.dauphin.de, **E-Mail** info@dauphin.de

Vertrieb/Distribution:

Dauphin HumanDesign® Group GmbH & Co. KG, Espanstraße 36, **D-91238 Offenhausen/Germany**
Tel. +49 (0) 91 58/17 - 7 00, **Fax** +49 (0) 91 58/17 - 7 01, **Internet** www.dauphin-group.com, **E-Mail** info@dauphin-group.com

Dauphin HumanDesign® Center national:

Berlin, Tel. +49 (0) 30 - 4 35 57 60, **Fax** +49 (0) 30 - 43 55 76 20, **E-Mail** dhdc.berlin@dauphin.de
Dresden, Tel. +49 (0) 3 51 - 8 89 06 98/99, **Fax** +49 (0) 3 51 - 8 89 06 93, **E-Mail** dhdc.dresden@dauphin.de
Frankfurt/Offenbach, Tel. +49 (0) 69 - 98 55 82 88 0, **Fax** +49 (0) 69 - 98 55 82 88 99, **E-Mail** dhdc.frankfurt@dauphin.de
Günzburg, Tel. +49 (0) 91 58 - 17 421, **Fax** +49 (0) 91 58 - 17 776, **E-Mail** info@dauphin-group.com
Hamburg, Tel. +49 (0) 40 - 7 80 74 80, **Fax** +49 (0) 40 - 78 07 48 29, **E-Mail** dhdc.hamburg@dauphin.de
Hannover, Tel. +49 (0) 51 36 - 8 40 83, **Fax** +49 (0) 51 36 - 8 72 47, **E-Mail** dhdc.hannover@dauphin.de
Karlsruhe, Tel. +49 (0) 7 21 - 6 25 21 20, **Fax** +49 (0) 7 21 - 61 64 83, **E-Mail** dhdc.karlsruhe@dauphin.de
Köln/Hürth, Tel. +49 (0) 22 33 - 20 89 00, **Fax** +49 (0) 22 33 - 2 08 90 26, **E-Mail** dhdc.koeln@dauphin.de
München, Tel. +49 (0) 89 - 4 99 49 10, **Fax** +49 (0) 89 - 49 94 91 22, **E-Mail** dhdc.muenchen@dauphin.de

Dauphin HumanDesign® Center international:

Züco Dauphin HumanDesign AG, Kirschgartenstraße 12, **CH-4051 Basel, Switzerland**
Tel. +41 (0) 61 - 283 80 00, **Fax** +41 (0) 61 - 283 80 05, **Internet** www.zueco-dauphin.ch, **E-Mail** info@zueco-dauphin.ch
Dauphin Benelux B.V., Staalweg 1-3, **NL-4104 AS Culemborg, Netherlands**
Tel. +31 (0) 345 - 533 292, **Fax** +31 (0) 345 - 533 132, **Internet** www.dauphin.nl, **E-Mail** info@dauphin.nl
Dauphin Office Chairs NV/SA, Terbekehofdreef 31-33, **B-2610 Antwerpen (Wilrijk), Belgium**
Tel. +32 (0) 3 887 - 78 - 50, **Fax** +32 (0) 3 887 - 90 - 19, **Internet** www.dauphin-nv-sa.be, **E-Mail** dauphinsales@scarlet.be
Dauphin France S. A., 6, Allée du Parc de Garlande, **F-92220 Bagneux, France**
Tel. +33 (0) 1 - 46 54 15 90, **Fax** +33 (0) 1 - 46 54 15 99, **Internet** www.dauphin-france.com, **E-Mail** infos@dauphin-france.com
Dauphin Italia, 3, Via Durini, **I-20122 Milano, Italy**
Tel. +39 02 - 76 01 83 94, **Fax** +39 02 - 76 02 17 23, **Internet** www.dauphin.it, **E-Mail** dauphin@dauphin.it
Dauphin Scandinavia A/S, Frederikssundsvej 272, **DK-2700 Brønshøj, Denmark**
Tel. +45 - 44 53 70 53, **Fax** +45 - 44 53 80 50, **Internet** www.dauphin.dk, **E-Mail** info@dauphin.dk
Dauphin HumanDesign UK Limited, Peter Street, Blackburn, Lancashire BB1 5LH, **Great Britain**
Tel. +44 (0) 12 54 - 5 22 20, **Fax** +44 (0) 12 54 - 68 04 01, **Internet** www.dauphinuk.com, **E-Mail** info@dauphinuk.com
Dauphin Office Seating Canada, 61 Telson Road, **Markham (Toronto), Ont. L3R 1E4, Canada**
Tel. +1 9 05 - 5 13 22 36, **Fax** +1 9 05 - 5 13 18 05, **E-Mail** dauphin@ca.inter.net
Dauphin North America, 300 Myrtle Avenue, **Boonton, New Jersey 07005, USA**
Tel. +1 9 73 - 2 63 11 00, **Fax** +1 9 73 - 2 63 35 51, **Internet** www.dauphin.com, **E-Mail** inquire@dauphin.com
Dauphin Office Seating S.A. (Pty) Ltd., „Dauphin House“, 109 Oxford Road, **ZA-2198 Rosebank, South Africa**
Tel. +27 (0) 11 - 447 - 9888, **Fax** +27 (0) 11 - 447 - 9889, **Internet** www.dauphin.co.za, **E-Mail** dauphin@global.co.za