

Farben + Stoffe Trends + Qualities



DAUPHIN

T!O:
TREND!OFFICE

DAUPHIN

HumanDesign® Group

Bali/Topas:C

Zusammensetzung/Composition:
100% Reine Kammgarnwolle/
Pure worsted wool
Gewicht/Weight: ca./approx. 560 g/m
Breite/Width: 150 cm
Lichtechtheit/Light fastness:
Note/value 5-6 (ISO 105-B02)
Reibechtheit/Fastness to rubbing:
nass/wet: 4-5/trocken/dry: 4-5
Scheuerfestigkeit/Abrasion resistance:
50.000 Touren/rubs (Martindale)
DIN EN 1021: Teil 1/Part 1/Teil 2/Part 2



0326 Bluebell



0327 Sorrento



0328 Mariner



0332 Garland



5112 Arancia



0333 Rosso



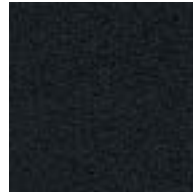
5140 Siena



0334 Rhino



0366 Steel



0335 Pitch

Steelcut:C

Zusammensetzung/Composition:
90% Kammgarnwolle/Worsted wool,
10% Nylon/Nylon
Gewicht/Weight: ca./approx. 880 g/m
Breite/Width: 140 cm
Lichtechtheit/Light fastness:
Note/value 5 (ISO 105-B02)
Reibechtheit/Fastness to rubbing:
nass/wet: 4/ trocken/dry: 4-5
Scheuerfestigkeit/Abrasion resistance:
100.000 Touren/rubs (Martindale)
DIN EN 1021: Teil 1/Part 1/Teil 2/Part 2



5322 Aventurine



5323 Amethyst



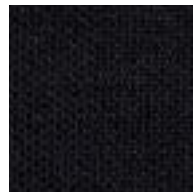
5331 Calcite



5311 Quartz



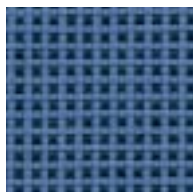
5310 Jasper



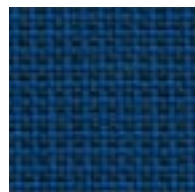
5300 Magnesite

Pro:C

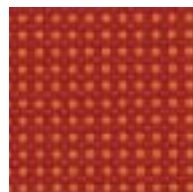
Zusammensetzung/Composition:
100% Trevira CS (Polyester)/
100% Trevira CS (Polyester)
Gewicht/Weight: ca./approx. 510 g/m
Breite/Width: 150 cm
Lichtechtheit/Light fastness:
Note/value 5-6 (ISO 105-B02)
Reibechtheit/Fastness to rubbing:
nass/wet: 4/trocken/dry: 4
Scheuerfestigkeit/Abrasion resistance:
80.000 Touren/rubs (Martindale)
DIN EN 1021: Teil 1/Part 1/Teil 2/Part 2
NF P 92-503/504 M1



2121 Cielo



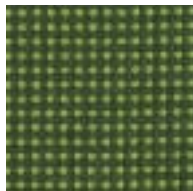
2120 Fjord



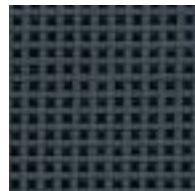
2111 Lava



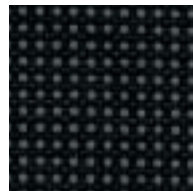
2110 Fire



2132 Meadow



2101 Dust



2100 Vulcano

Microcare:C

Zusammensetzung/Composition:
 100% Polyester mit Teflonoberfläche/
 100% Polyester with Teflon surface
 Trägergewebe/Substrate: Micromembrane
 Velourledereffekt, wasser- und urindicht,
 antibakteriell/velour-leather effect, water-
 and urine-proof, antibacterial
 Gewicht/Weight: ca./approx. 500 g/m
 Breite/Width: 150 cm
 Lichtechtheit/Light fastness: Note/value 5
 Reibechtheit/Fastness to rubbing:
 nass/wet: 4/trocken/dry: 4
 Scheuerfestigkeit/Abrasion resistance:
 80.000 Touren/rubs (Martindale)
 DIN EN 1021: Teil 1/Part 1/Teil 2/Part 2,
 DIN 4102-B1



5621 Suede Azure



6920 Suede Marine



6910 Suede Burgundy



6900 Suede Black

Fame:B

Zusammensetzung/Composition:
 95% New Zealand-Wolle/New Zealand wool,
 5% Polyamid/Polyamide
 Gewicht/Weight: ca./approx. 610 g/m
 Breite/Width: 140 cm
 Lichtechtheit/Light fastness:
 Note/value 5 (ISO 105-B02)
 Reibechtheit/Fastness to rubbing:
 nass/wet: 4-5/trocken/dry: 4-5
 Scheuerfestigkeit/Abrasion resistance:
 200.000 Touren/rubs (Martindale)
 DIN EN 1021: Teil 1/Part 1 Teil 2/Part 2



5622 Madrid



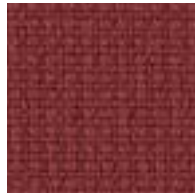
5620 Moscow



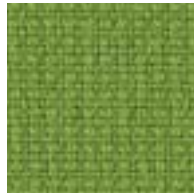
5611 Cairo



5621 Lisbon



5610 Paris



5630 Berlin



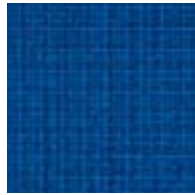
5601 Vienna



5600 Warsaw

Space:B

Zusammensetzung/Composition:
 100% Kammgarnwolle/Worsted wool
 Gewicht/Weight: ca./approx. 570 g/m
 Breite/Width: 150 cm
 Lichtechtheit/Light fastness:
 Note/value 4-6 (ISO 105-B02)
 Reibechtheit/Fastness to rubbing:
 nass/wet: 4-5/trocken/dry: 4-5
 Scheuerfestigkeit/Abrasion resistance:
 70.000 Touren/rubs (Martindale)
 DIN EN 1021: Teil 1/Part 1 Teil 2/Part 2



5021 Earth



5020 Neptun



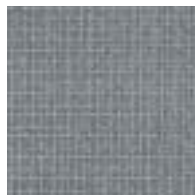
5022 Uranus



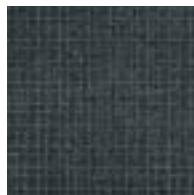
5010 Mars



5011 Venus



5002 Pluto



5001 Mercur



5000 Triton

Cava:B

Zusammensetzung/Composition:
 90% Kammgarnwolle/Worsted wool,
 10% Nylon/Nylon
 Gewicht/Weight: ca./approx. 460 g/m
 Breite/Width: 135 cm
 Lichtechtheit/Light fastness:
 Note/value 5-7 (ISO 105-B02)
 Reibechtheit/Fastness to rubbing:
 nass/wet: 4/trocken/dry: 4-5
 Scheuerfestigkeit/Abrasion resistance:
 80.000 Touren/rubs (Martindale)
 DIN EN 1021: Teil 1/Part 1 Teil 2/Part 2



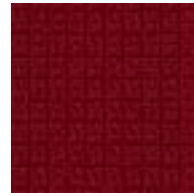
5225 Mediterranean



5221 Adria



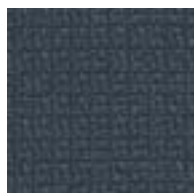
5220 Amazon



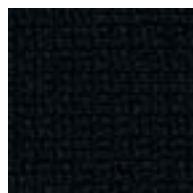
5210 Canyon



5202 Sacramento



5201 Savannah



5200 Senegal

Stavanger:B

Zusammensetzung/Composition:
 100% Trevira CS/Trevira CS
 Gewicht/Weight: ca./approx. 406 g/m
 Breite/Width: 150 cm
 Lichtechtheit/Light fastness:
 Note/value 5-7 (ISO 105-B02)
 Reibechtheit/Fastness to rubbing:
 nass/wet: 5/trocken/dry: 5
 Scheuerfestigkeit/Abrasion resistance:
 100.000 Touren/rubs (Martindale)
 DIN EN 1021: Teil 1/Part 1/Teil 2/Part 2
 NFP 92-503/504M1



2931 Ariagne



2920 Ran



2912 Lada



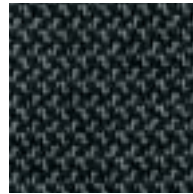
2910 Bastet



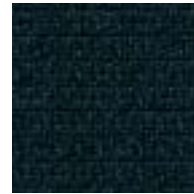
2930 Dea



2903 Hades



2901 Alekto



2900 Hekate

Globe:B

Zusammensetzung/Composition:
 100% Polyester/Polyester
 Gewicht/Weight: ca./approx. 675 g/m
 Breite/Width: 145 cm
 Lichtechtheit/Light fastness:
 Note/value 5 (ISO 105-B02)
 Reibechtheit/Fastness to rubbing:
 nass/wet: 4-5/trocken/dry: 4-5
 Scheuerfestigkeit/Abrasion resistance:
 80.000 Touren/rubs (Martindale)
 DIN EN 1021: Teil 1/Part 1 Teil 2/Part 2



4521 Orchid



4520 Primrose



4530 Daisy



4510 Rose



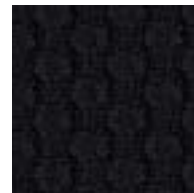
4540 Calla



4501 Iris



4502 Clove



4500 Lily

Decade:B

Speziell für 24-Std.-Einsatz/ Especially for 24 hour use

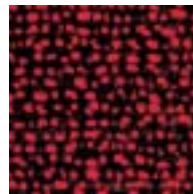
Zusammensetzung/Composition:
 50% Polyamid/Polyamide,
 33% Schurwolle/Virgin wool,
 10% Visil/Visil, 7% Viskose/Viscose
 Gewicht/Weight: ca./approx. 610 g/m
 Breite/Width: 140 cm
 Lichtechtheit/Light fastness:
 Note/value 6 (ISO 105-B02)
 Reibechtheit/Fastness to rubbing:
 nass/wet: 4/trocken/dry: 4
 Scheuerfestigkeit/Abrasion resistance:
 500.000 Touren/rubs (Martindale)
 DIN EN 1021:Teil 1/Part 1/Teil 2/Part 2



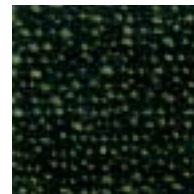
4022 Perpetual



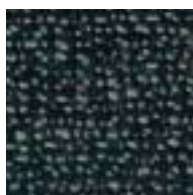
4020 Hour



4010 Minute



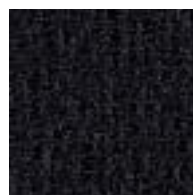
4031 Moment



4001 Era



4000 Night



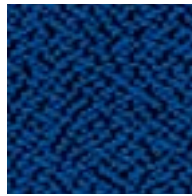
4002 Forever

King:A

Zusammensetzung/Composition:
100% Trevira CS (Polyester)/
100% Trevira CS/(Polyester)
Gewicht/Weight: ca./approx. 410 g/m
Breite/Width: 140 cm
Lichtechtheit/Light fastness:
Note/value 5-6 (ISO 105-B02)
Reibechtheit/Fastness to rubbing:
nass/wet: 4-5/trocken/dry: 4-5
Scheuerfestigkeit/Abrasion resistance:
100.000 Touren/rubs (Martindale)
DIN EN 1021: Teil 1/Part 1/Teil 2/Part 2
NF P 92-503/504 M1



0232 Aquilia



0231 Spika



0266 Tigris



0234 Goya



2311 Balbi



0235 Etna



0265 Vesuv



0268 Nil



2301 Apo



0267 Brazil



0237 Dema



0238 Nigra

King Melange:A

Zusammensetzung/Composition:
100% Trevira CS (Polyester)/
100% Trevira CS/(Polyester)
Gewicht/Weight: ca./approx. 390 g/m
Breite/Width: 140 cm
Lichtechtheit/Light fastness:
Note/value 6 (ISO 105-B02)
Reibechtheit/Fastness to rubbing:
nass/wet: 4-5/trocken/dry: 4-5
Scheuerfestigkeit/Abrasion resistance:
50.000 Touren/rubs (Martindale)
DIN EN 1021: Teil 1/Part 1/Teil 2/Part 2
NF P 92-503/504 M1



2521 Garda



2520 Grado



2531 Tropea



2530 Tivoli



2510 Ferrara



2501 Melfi



2500 Taranto

Charlotta:A

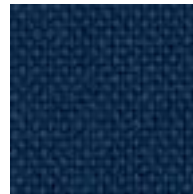
Zusammensetzung/Composition:
60% Viskose/Viscose, 40% Wolle/Wool
Gewicht/Weight: ca./approx. 570 g/m
Breite/Width: 140 cm
Lichtechtheit/Light fastness:
Note/value 6 (ISO 105-B02)
Reibechtheit/Fastness to rubbing:
nass/wet: 4/trocken/dry: 4
Scheuerfestigkeit/Abrasion resistance:
50.000 Touren/rubs (Martindale)
⚡ = leitfähig/conductive
DIN EN 1021: Teil 1/Part 1/Teil 2/Part 2



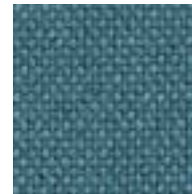
0504 (0404 ⚡)
Corinth



0576 Royal



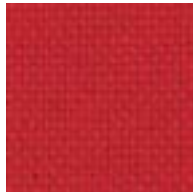
0502 (0402 ⚡)
Indigo



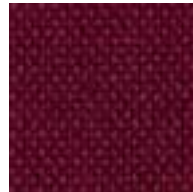
0508 Aqua



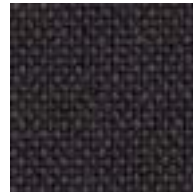
0575 Mermaid



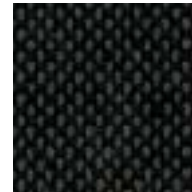
0522 (0422 ⚡)
Tornado



0521 (0421 ⚡)
Bordeaux



0503 (0410 ⚡)
Espresso



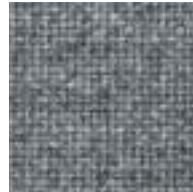
0501 (0403 ⚡)
Mocca



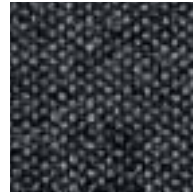
0567 Bosco



0500 Champagne



0513 (0413 ⚡) Grey



0516 Charcoal



0511 (0411 ⚡) Black

Valencia:A

Kunstleder/Vinyl
Zusammensetzung/Composition:
Trägergewebe/Base fabric:
100% Polyester/Polyester
Beschichtung/coating: 100 % PVC/PVC
Blut- urin- und ölbeständig, schwerentflammbar/
Blood, urine and oil resistant, flame retardant
Gewicht/Weight: ca./approx. 900 g/m
Breite/Width: 140 cm
Lichtechtheit/Light fastness:
Note/value 6 (ISO 105-B02)
Scheuerfestigkeit/Abrasion resistance:
50.000 Touren/rubs (Martindale)
DIN EN 1021: Teil 1/Part 1/Teil 2/Part 2



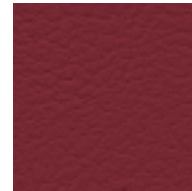
3221 Delft



3220 Marine



3202 Rot/Red



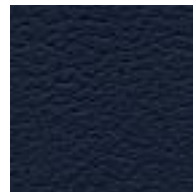
3207 Port



3205 Weiß/White



3208 Titan



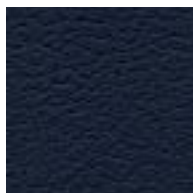
3200 Schwarz/Black



3230 Grün/Green

Madrid:A

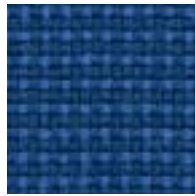
Kunstleder leitfähig/Vinyl conductive
Zusammensetzung/Composition:
Trägergewebe/Base fabric 100%
Polyester/Polyester, Beschichtung/coating
100 % PVC/PVC
Gewicht/Weight: ca./approx. 580 g/m
Breite/Width: 140 cm
Lichtechtheit/Light fastness:
Note/value 5-6 (ISO 105-B02)
Reibechtheit/Fastness to rubbing:
nass/wet: 4-5/ trocken/dry: 4-5



0426 ⚡ Schwarz/Black

Chateau Plus:P

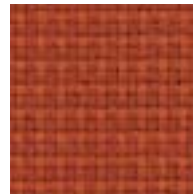
Zusammensetzung/Composition:
 100% Perfentex® Plus/100% Perfentex® Plus
 Gewicht/Weight: ca./approx. 350 g/m
 Breite/Width: 140 cm
 Lichtechtheit/Light fastness: Note/value 6
 Reibechtheit/Fastness to rubbing:
 nass/wet: 4/trocken/dry: 4
 Scheuerfestigkeit/Abrasion resistance:
 50.000 Touren/rubs (Martindale)
 DIN EN Teil 1/Part 1/Teil 2/Part 2
 NF P 92-503-M1
 CSE-RF 3/77-Class 1



2821 Chinon



2820 Bonpas



2811 Noizay



2810 Dollard



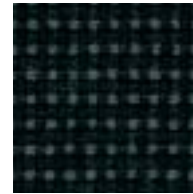
2840 Medoc



2830 Avrilly



2801 Fenelon



2800 Hazeville

Polo:P

Zusammensetzung/Composition:
 100% Polyester/100% Polyester
 Gewicht/Weight: ca./approx. 350 g/m
 Breite/Width: 140 cm
 Lichtechtheit/Light fastness:
 Note/value 6 (ISO 105-B02)
 Reibechtheit/Fastness to rubbing:
 nass/wet: 4-5/trocken/dry: 4-5
 Scheuerfestigkeit/Abrasion resistance:
 60.000 Touren/rubs (Martindale)
 DIN EN 1021: Teil 1/Part 1/Teil 2/Part 2



4621 Sicilia



4610 Liguria



4611 Piemonte



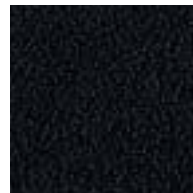
4630 Toscana



4602 Sardegna



4601 Calabria

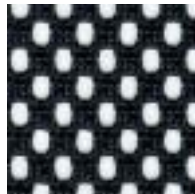


4600 Veneto

Web A

**Preisgruppe je nach Sitzpolsterung/
 Price depending on upholstery of
 the seat.**

Web A: 100% Polyester/Polyester
 ca./approx. 510 g/lfm.
 100.000 Scheuertouren/Rubs
 Netzgewebe/Mesh fabric Web A
 für Rückenlehnen/for backrests **Mille Miglia,
 Join Me, Teo 2** und/and **dat-o**



Web A
 0465 Trampoline

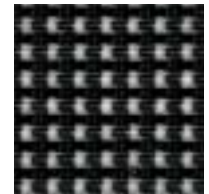


Web A*
 0466 Matrix
 * nur für dat-o/only for dat-o

Web E

**Preisgruppe je nach Sitzpolsterung/
 Price depending on upholstery of
 the seat.**

Web E: 75% Polyester/Polyester,
 25% Polyamid/Polyamide
 ca./approx. 370 g/lfm.
 40.000 Scheuertouren/Rubs
 Netzgewebe/Mesh fabric Web E
 für Rückenlehnen/for backrests **HighWay**

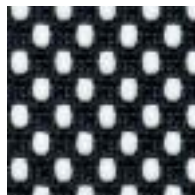


Web E
 0441 Route

Web J

**Preisgruppe je nach Sitzpolsterung/
 Price depending on upholstery of
 the seat.**

Web J: 100% Polyester/polyester
 ca./approx. 745 g/lfm.
 100.000 Scheuertouren/Rubs
 Netzgewebe/Mesh fabric Web J
 für Rückenlehnen/for backrests **TakeOver**



Web J
 4249 Joy

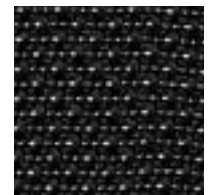


Web J
 4248 Pleasure

Web G

**Preisgruppe je nach Sitzpolsterung/
 Price depending on upholstery of
 the seat.**

Web G: 100% Trevira CS/100% Trevira CS
 25.000 Scheuertouren/Rubs
 BS 5852 Teil 1/Part1
 Strickgewebe/Knit fabric Web G
 für Rückenlehnen/for backrests **Open End**

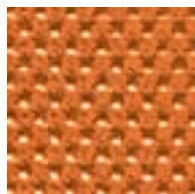


Web G
 0445 Open

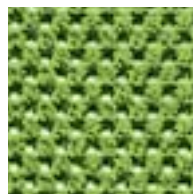
Web H

**Preisgruppe je nach Sitzpolsterung/
 Price depending on upholstery of
 the seat.**

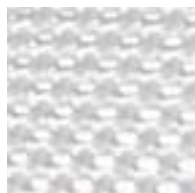
Web H: 100% Polyamid/Polyamide
 Textiles Strickgewebe in Netzoptik Web H
 für Rückenlehnen **TakeOver**
 (Option gegen Mehrpreis)/
 Textile knit fabric Web H for backrests
TakeOver in a mesh look
 (option available with surcharge)



Web H
 4241 Orange/Orange



Web H
 4242 Grün/Green



Web H
 4240 Weiß/White

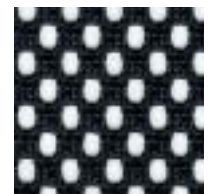


Web H
 4245 Schwarz/Black

Web I

**Preisgruppe je nach Sitzpolsterung/
 Price depending on upholstery of
 the seat.**

Web I: 100% Polyester/Polyester
 ca./approx. 465 g/lfm.
 50.000 Scheuertouren/Rubs
 Atmungsaktiv und feuchtigkeitregulierend/
 Breathable and moisture regulating
 Netzgewebe/Mesh fabric Web I
 für Rückenlehnen/for backrests **sim-o mesh**



Web I
 0448 Ikarus

Lavalina®:F

Premium Echt-Leder

Feinstes, naturbelassenes Nappaleder. Anilingefärbtes Rindsobleder der Spitzenklasse. Mit natürlichen Ölen behandelt, tuchweicher Griff, atmungsaktiv, hautsympathisch, feuchtigkeitsregulierend. Wasserlösliche Farben ohne chemische Lösungsmittel./

Premium leather

The finest natural Nappa leather top quality. Aniline dyed cowhide leather. Treated with natural oils, fabric-soft touch, breathable, dermatologically safe, moisture control. Water-soluble dyes without solvents. Lichtechtheit/Light fastness: Note/value 4 (DIN 54004) Reibechtheit/Fastness to rubbing: nass/wet: 4/trocken/dry: 4 (DIN 53339) DIN 1021 - Teil 1/Part 1/Teil 2/Part 2



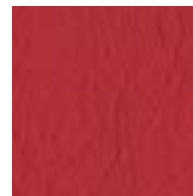
0708 Canaletto



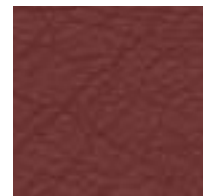
0702 Lake



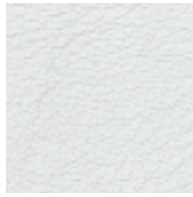
0701 Merlo



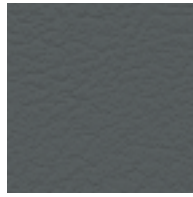
7010 Calypso



7012 Terracotta



0795 White



7001 Anthracite



0700 Black



7031 Pistachio



7040 Cacao

Leder/Leather:E

Nappaleder pigmentiert (Semi-Anilinleder) anilingefärbtes leicht mit Pigmentfarbe abgedecktes Rindsobleder, sehr strapazierfähig, vollnarbig, geprägt, chromgegerbt./ Pigmented Nappa leather (semi-aniline leather) aniline dyed cowhide leather with light pigment dyeing, very hard wearing, full-grain, embossed, alum tanned.

Lichtechtheit/Light fastness:

Note/value 5 (DIN 54004)

Reibechtheit/Fastness to rubbing:

nass/wet: 4-5/trocken/dry: 4-5 (DIN 53339)



0180 Onyx

Comfort:E

Zusammensetzung/Composition:

88% Polyester/Polyester,

12% Polyurethan/Polyurethane

Gewicht/Weight: ca./approx. 385 g/m

Breite/Width: 140 cm

Lichtechtheit/Light fastness:

Note/value 5 (ISO 105-B02)

Reibechtheit/Fastness to rubbing:

nass/wet: 4-5/trocken/dry: 4-5

Scheuerfestigkeit/Abrasion resistance:

100.000 Touren/rubs (Martindale)

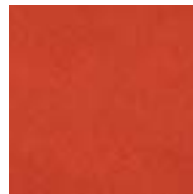
DIN EN 1021: Teil 1/Part 1



6022 Lake



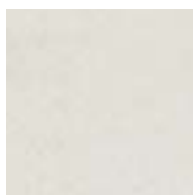
6020 Pacific



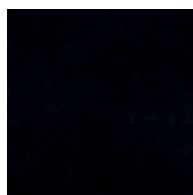
6011 Persian



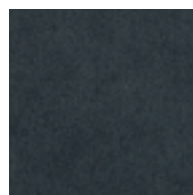
6010 Tropic



6042 Snow



6000 Graphite



6001 Pewter



6040 Siam

Decade Plus:E

Für 24-Stunden-Drehsessel und Kassenstühle/For 24-hour executive swivel and checkout chairs

Zusammensetzung/Composition:

50% Polyamid/Polyamide,

33% Schurwolle/Virgin wool, 10% Visil/Visil,

7% Viskose/Viscose

mit ledergefassten Seitenteilen/

with side parts trimmed in leather

Gewicht/Weight: ca./approx. 658 g/m

Breite/Width: 140 cm

Lichtechtheit/Light fastness:

Note/value 5 (ISO 105-B02)

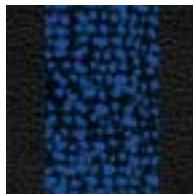
Reibechtheit/Fastness to rubbing:

nass/wet: 4/trocken/dry: 4

Scheuerfestigkeit/Abrasion resistance:

500.000 Touren/rubs (Martindale)

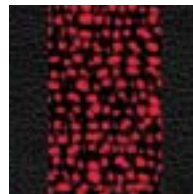
DIN EN 1021:Teil 1/Part 1/Teil 2/Part 2



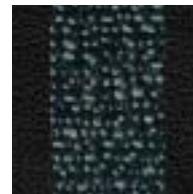
4082 Hour Plus



4085 Moment Plus



4081 Minute Plus



4089 Era Plus

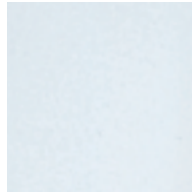


4080 Night Plus

Kunststoff-Farben/
Plastic colours:
Open End



Code 40
Blau/Blue



Code 42
Weiß/White



Code 41
Anthrazit/Anthracite



Code 08
Rot/Red



Code 06
Schwarz/Black

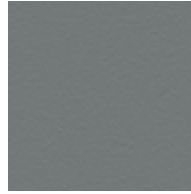
Kunststoff-Farben/
Plastic colours: **Eddy**



Code 09
Blau/Blue



Code 08
Rot/Red



Code 07
Grau/Grey



Code 06
Schwarz/Black



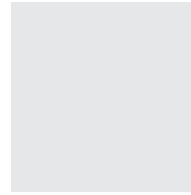
Code 22 Aqua
transparent/translucent



Code 23 Ocean
transparent/translucent



Code 21 Orange
transparent/translucent



Code 24 Ice
transparent/translucent

Kunststoff-Farben/
Plastic colours: **Ecco!**



Code 19
Ultramarin/Navy



Code 18
Rubinrot/Ruby-red



Code 06
Schwarz/Black

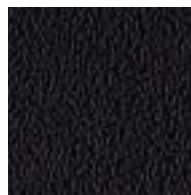
Kunststoff-Farben/
Plastic colours: **mant-o**



Code 11
Hellblau/Light blue



Code 40
Dunkelblau/Dark blue



Code 06
Schwarz/Black

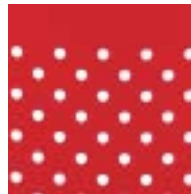
Lochblech-Farben/
Perforated metal plate
colours: **Sento**



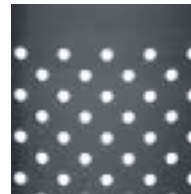
Code 47
Blau/Blue



Code 04
Silber/Silver



Code 08
Rot/Red



Code 06
Schwarz/Black

Holz/Wood: **Teo, Open End, Sento, Amico, Froggy, Enzo, Bobo**

Wasserbeize auf Buche

Standardausführung: Buche natur (0150)

Aufpreise für Beiztöne lt. Preisliste/

Water stained beechwood

Standard design: natural beechwood (0150)

Extra charge for special shades, see price list

* nur für Bobo und Enzo/
only for Bobo and Enzo



0150
Buche natur/
Natural beechwood



0118
Buche ahorn gebeizt/
Maple stained beech

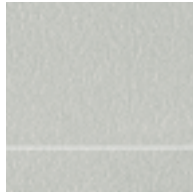


0121 *
Buche weiß gebeizt/
White stained beech



0129
Buche schwarz gebeizt/
Black stained beech

Tischplatten/Table Tops:
Agenda, Enzo, Plenar



0891
Melamin hellgrau,
Kante ABS hellgrau/
Light grey melamine,
light grey ABS edge



0899
Melamin hellgrau
gesprenkelt, Kante ABS
hellgrau/Light grey
speckled melamine,
light grey ABS edge



0885
Buche Dekor,
Kante ABS Buche/
Beechwood finish,
beech ABS edge



0869
Ahorn Dekor,
Kante ABS Ahorn/
Maple finish,
maple ABS edge



0881
Melamin schwarz,
Kante ABS schwarz/
Black melamine,
black ABS edge



0890
Melamin hellgrau,
Kante ABS grau-blau
gestreift/
Light grey melamine,
grey and blue striped
ABS edge



0894
Melamin hellgrau
gesprenkelt, Kante ABS
grau blau gestreift/
Light grey speckled
melamine, grey and blue
striped ABS edge



0886
Buche Dekor,
Kante Multiplex/
Beechwood finish,
multiplex edge



0888
Buche-Echtholz furnier,
Kante Buche Echtholz/
Genuine beech veneer,
genuine beech edge



0887
Platte und Kante Buche-
Echtholz furnier, ahorn
gebeizt/Top and edge
genuine beech veneer,
maple stained

Tischplatten/Table Tops:
Agenda Vario



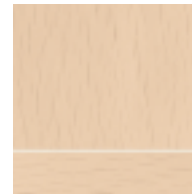
0841
Melamin hellgrau, Platte
aufgedoppelt (45 mm).
Kante Buche Massivholz,
unten 45° angeschrägt/
Light grey melamine,
reinforced table top (45
mm). Solid wood beech
edge, bevelled below
(45°)



0842
Melamin hellgrau
gesprenkelt, Platte
aufgedoppelt (45 mm).
Kante Buche Massivholz,
unten 45° angeschrägt/
Light grey speckled,
melamine, reinforced
table top (45 mm).
Solid wood beech edge,
bevelled below (45°)



0844
Buche Dekor, Platte
aufgedoppelt (45 mm).
Kante Buche Massivholz,
unten 45° angeschrägt/
Beechwood finish,
reinforced table top
(45 mm). Solid wood
beech edge, bevelled
below (45°)

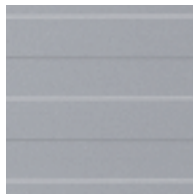


0845
Ahorn Dekor, Platte
aufgedoppelt (45 mm).
Kante Buche Massivholz
ahorn gebeizt, unten 45°
angeschrägt/
Maple finish, reinforced table
top (45 mm). Solid wood
beech edge, maple stained,
bevelled below (45°)

**Platte und Kante/
Top and edge**



Tischplatten/
Table Tops: **Join Me**



0160
Aluminium-Platte, silber
eloxiert/
Aluminium table top,
anodised silver



0165
Aluminium-Platte,
Einlage Melamin silber,
Kante Aluminium/
Aluminium table top,
silver melamine insert,
aluminium edge

Tischplatten/
Table Tops:
Bobo

Für Bobo auch
Holzplatten erhältlich,
Oberflächenauswahl
Holz (s.o.)/
For Bobo also wooden
tops available,
surface finishes Wood
(see above)



0129
Buche schwarz
gebeizt/
Black stained beech



0998
Satiniertes
Sicherheitsglas/
Satin-finish safety glass
(ESG/DIN 1249)

Tischplatten/
Table Tops: **Ecco!**



0910
HPL-Platte hellgrau
gesprenkelt, Kante
schwarz/
Light grey speckled
HPL table top, black
edge



0920
HPL-Platte
silber, Kante schwarz/
Silver HPL table top,
black edge



0930
wie 0920, jedoch mit
4 durchgehenden Alu-
Einlagen (Alucompact®)/
as 0920 but with 4
continuous aluminium
inserts (Alucompact®)

Tischplatte/
Table Top:
FairPlay



0998
Satiniertes
Sicherheitsglas/
Satin-finish safety
glass (ESG/DIN 1249)

www.dauphin-group.com
www.dauphin.de

Vertrieb/Distribution:

Dauphin HumanDesign® Group GmbH & Co. KG	Espanstraße 36	D	91238 Offenhausen	+49 (0) 91 58 / 17- 7 00	info@dauphin-group.com
--	----------------	---	-------------------	--------------------------	------------------------

Hersteller/Manufacturer:

Bürositzmöbelfabrik Friedrich-W. Dauphin GmbH & Co.	Espanstraße 29	D	91238 Offenhausen	+49 (0) 91 58 / 17- 0	info@dauphin.de
--	----------------	---	-------------------	-----------------------	-----------------

Dauphin HumanDesign® Center national:

Dauphin HumanDesign® Center Berlin	Wittestraße 30c	D	13509 Berlin	+49 (0) 30 - 43 55 76 - 620	dhdc.berlin@dauphin.de
Dauphin HumanDesign® Center Dresden	An der Flutrinne 12a	D	01139 Dresden	+49 (0) 3 51 - 7 95 26 64 - 630	dhdc.dresden@dauphin.de
Dauphin HumanDesign® Center Hamburg	Ausschläger Billdeich 48	D	20539 Hamburg	+49 (0) 40 - 78 07 48 - 600	dhdc.hamburg@dauphin.de
Dauphin HumanDesign® Center Hannover	Stellerstraße 34	D	30916 Isernhagen	+49 (0) 51 36 - 97 35 79 - 610	dhdc.hannover@dauphin.de
Dauphin HumanDesign® Center Karlsruhe	Printzstraße 13	D	76139 Karlsruhe	+49 (0) 7 21 - 6 25 21 20	dhdc.karlsruhe@dauphin.de
Dauphin HumanDesign® Center Köln/Hürth	Kalscheurener Straße 19a	D	50354 Hürth-Efferen	+49 (0) 22 33 - 20 89 0 - 640	dhdc.koeln@dauphin.de
Dauphin HumanDesign® Center Offenbach	Strahlenbergerstraße 110	D	63067 Offenbach	+49 (0) 69 - 98 55 82 88 - 650	dhdc.frankfurt@dauphin.de

Dauphin HumanDesign® Center international:

Dauphin HumanDesign® NV/SA	Terbekehofdreef 46-48	B	2610 Antwerpen Wilrijk	+32 (0) 3 887 - 78 - 50	info@dauphin-nv-sa.be
Dauphin Office Seating Inc.	61 Telson Road	CA	Ont. L3R 1E4 Markham, Toronto	+1 9 05 - 5 13 22 36	dauphin@ca.inter.net
Züco Dauphin HumanDesign® AG	Kirschgartenstrasse 12	CH	4051 Basel	+41 (0) 61 - 283 80 00	info@zueco-dauphin.ch
Dauphin Scandinavia A/S	Frederikssundsvej 272	DK	2700 Brønshøj	+45 - 44 53 70 53	info@dauphin.dk
Dauphin France S. A.	6, Allée du Parc de Garlande	F	92220 Bagneux	+33 (0) 1 - 46 54 15 90	infos@dauphin-france.com
Dauphin HumanDesign® UK Limited	Peter Street	GB	Blackburn, Lancashire BB1 5LH	+44 (0) 12 54 - 5 22 20	info@dauphinuk.com
Dauphin Italia S.r.l.	Via G.Crespi n. 12	I	20134 Milano	+39 02 - 76 01 83 94	dauphin@dauphin.it
Dauphin HumanDesign® B.V.	Staalweg 1-3	NL	4104 AS Culemborg	+31 (0) 345 - 533 292	info@dauphin.nl
Dauphin North America	300 Myrtle Avenue	US	07005 Boonton, New Jersey	+1 800 631 11 86	inquire@dauphin.com
Dauphin Office Seating S.A. (Pty) Ltd.	62 Hume Road, Dunkeld	ZA	2196 Johannesburg	+27 (0) 11 - 447 - 98 88	dauphin@global.co.za

10 656 17 07/08 2' 03 36 Farbabweichung, Irrtum und Änderung vorbehalten / Differences in colour, errors and modifications excepted.

DAUPHIN

HumanDesign® Group

Ihr Fachhändler/Your stockist: